



Virginia Healthcare Workforce Briefs

Indicators from the Bureau of Labor Statistics'
Current Employment Statistics Survey
Series 2: Regional & Sectoral Employment

Series 2, Issue 108

March 2021

Inside this Brief:

Regional Employment	2
Regional Employment Growth	3
Subsector Employment	3
Subsector Employment Growth	4
Region Map	5
About the Data	6

Highlights

- ◆ Data in this series are not seasonally adjusted and exhibit short-term volatility from fluctuations in holidays, weekends, weather and other seasonal factors. Estimates for the most recent month are preliminary.
- ◆ Northern Virginia's HC&SA sector enjoyed impressive employment growth in February with the creation of 3,000 new jobs, a gain that represents a one-month annualized growth rate of 30.6%. The Rest of Virginia also experienced strong HC&SA employment growth with the addition of 1,300 jobs in February, while Hampton Roads created 400 HC&SA jobs during the month. However, employment in Richmond's HC&SA sector fell by 1,400 in February.
- ◆ Ambulatory Health Care Services made the largest contribution to this month's HC&SA employment growth in Virginia. This subsector created 2,400 jobs in February, which represents a one-month annualized employment growth rate of 16.1%. Social Assistance also enjoyed strong growth in February with the creation of 700 jobs, which translates into a 11.9% annualized growth rate. Nursing & Residential Care Facilities added 200 jobs in February, while Hospitals saw no change in employment.

Data in this report are not seasonally adjusted. Self-employed persons, including health professionals in private practice, are not included.

Data in Brief

Not Seasonally Adjusted*	Employment, in Thousands				Growth Rate, Annualized		
	Feb. 2020	Nov. 2020	Jan. 2021	Feb. 2021	12 Month	3 Month	1 Month
Virginia							
Total Nonfarm	4,055.2	3,915.0	3,842.0	3,851.5	-5.0%	-6.3%	3.0%
Health Care & Social Assistance	461.4	422.8	440.8	444.1	-3.7%	1.2%	9.4%
Hampton Roads							
Total Nonfarm	793.7	764.6	753.0	756.3	-4.7%	-4.3%	5.4%
Health Care & Social Assistance	96.9	92.7	91.5	91.9	-5.2%	-3.4%	5.4%
Northern Virginia							
Total Nonfarm	1,522.2	1,467.2	1,444.0	1,448.1	-4.9%	-5.1%	3.5%
Health Care & Social Assistance	140.9	133.0	133.4	136.4	-3.2%	10.6%	30.6%
Richmond							
Total Nonfarm	686.2	657.5	642.6	641.2	-6.6%	-9.6%	-2.6%
Health Care & Social Assistance	88.4	83.9	83.6	82.2	-7.0%	-7.9%	-18.3%
Rest of Virginia							
Total Nonfarm	1,053.1	1,025.7	1,002.4	1,005.9	-4.5%	-7.5%	4.3%
Health Care & Social Assistance	135.2	133.2	132.3	133.6	-1.2%	1.2%	12.4%

Preliminary estimates are italicized

*Seasonally adjusted data are adjusted by the Bureau of Labor Statistics to account for weather and other seasonal changes. Since the U.S. Bureau of Labor Statistics does not provide seasonally adjusted data at this level, this series uses non-seasonally adjusted data exclusively. Seasonal variation may account for some of the variation in time series data. When comparing data in this series to other HWDC series or other publications it is important to note whether the data reported have been seasonally adjusted.

Regional HC&SA Employment Growth, Level

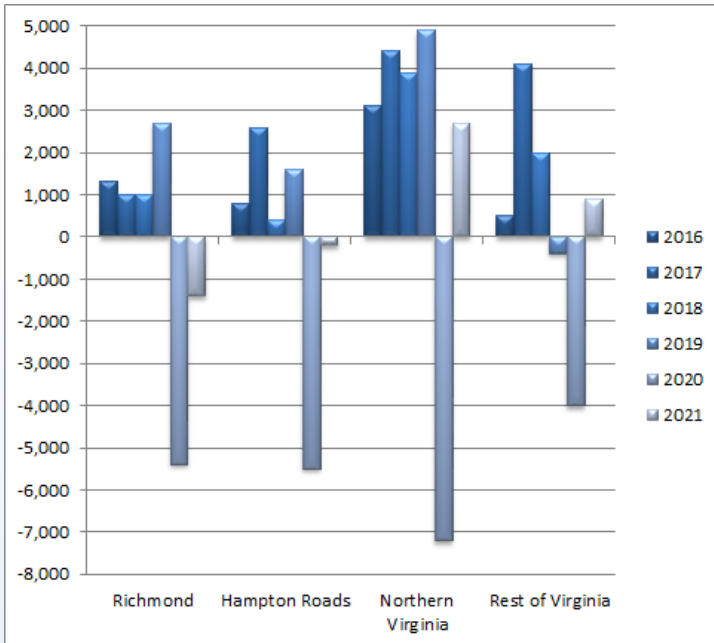


Figure 1: Annual & YTD Change in HC&SA Regional Employment (Not Seasonally Adjusted, Full-Year Change for 2016-2020, Year-to-Date Change for 2021).

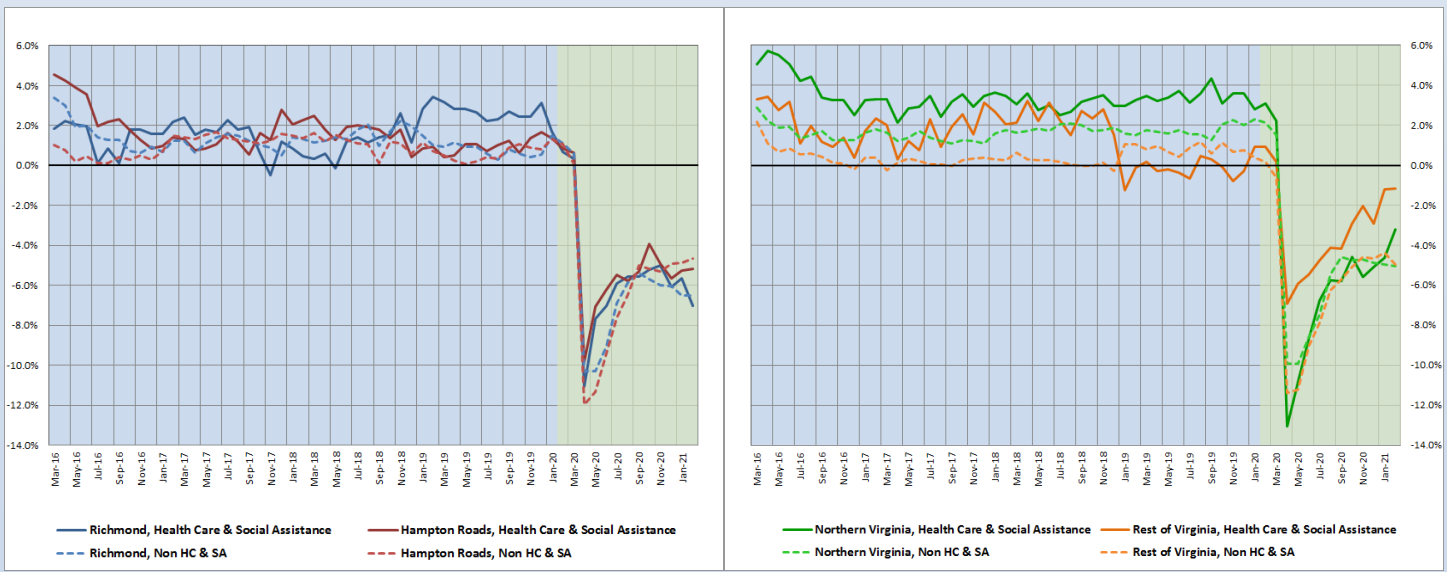
According to the preliminary data released on Friday, March 26, 2021, by the U.S. Department of Labor, Bureau of Labor Statistics, most HC&SA employment growth in February took place in Northern Virginia, which enjoyed its strongest monthly job gain since last June during the initial stages of the post-lockdown economic recovery period. In February, Northern Virginia’s HC&SA sector created 3,000 new jobs, a gain that translates into an impressive one-month annualized employment growth rate of 30.6%. Even with January’s decline in employment, Northern Virginia has still added 3,400 HC&SA jobs to the state’s economy over the past three months, which represents a 10.6% annualized growth rate.

The Rest of Virginia also enjoyed strong HC&SA employment growth during the month. This region created 1,300 HC&SA jobs in February, a gain that translates into a 12.4% annualized growth rate. Hampton Roads experienced positive HC&SA employment growth as well with the addition of 400 new jobs in February. On the other hand, Richmond’s HC&SA sector lost 1,400 jobs during the month.

Year-Over-Year Regional Employment Growth

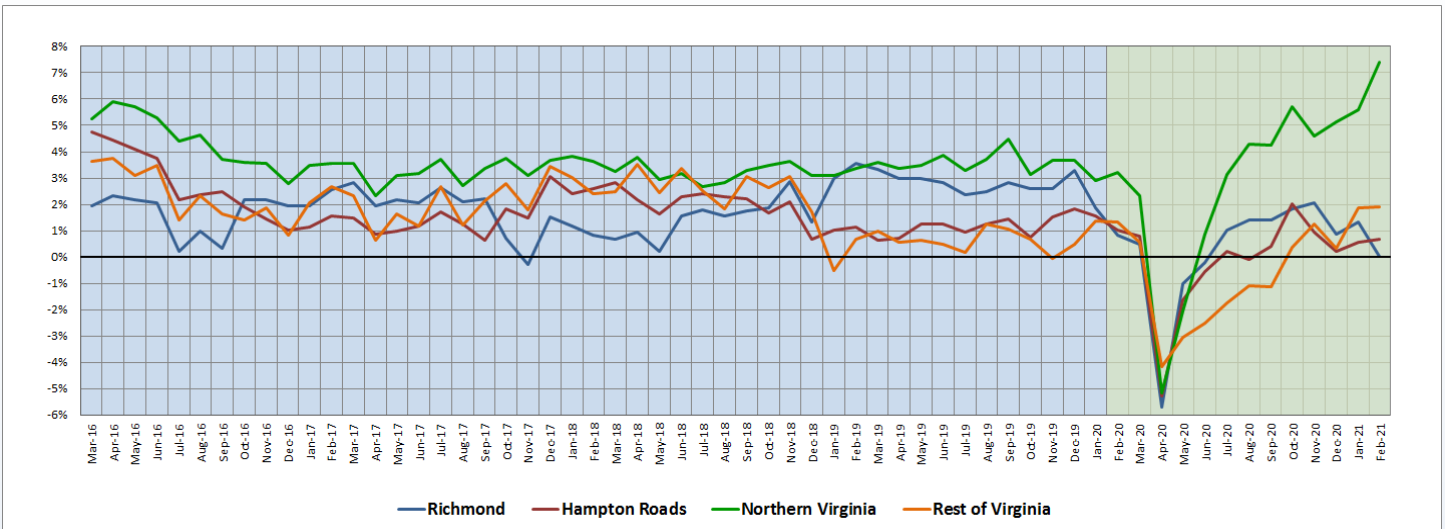
In February, Northern Virginia’s year-over-year HC&SA employment growth rate increased from -4.65% to -3.19%. Despite remaining negative, this growth rate has still reached its highest level since last April at the beginning of the coronavirus pandemic. The same is also true of the Rest of Virginia, which saw its year-over-year HC&SA employment growth rate edge up slightly from -1.19% to -1.18% during the month. Meanwhile, Hampton Roads experienced an increase in its own year-over-year HC&SA employment growth rate from -5.28% to -5.16% in February, but the comparable growth rate for Richmond went in the opposite direction, falling from -5.64% to -7.01% during the month.

Figure 2: Year-Over-Year Employment Growth (Not Seasonally Adjusted).



12-Month Average Employment Growth by Region

Figure 3: 12-Month Moving Average, HC&SA Regional Employment Growth Rate (Not Seasonally Adjusted).



The ascent of Northern Virginia’s 12-month HC&SA employment growth rate moving average continued in February. In fact, this ascent accelerated during the month with an increase from 5.60% to 7.41%. At this level, Northern Virginia’s HC&SA sector has seen its 12-month employment growth rate moving average reach its highest value in well over one decade. Meanwhile, the Rest of Virginia saw its 12-month HC&SA employment growth rate moving average reach its highest value in over two years after increasing slightly from 1.88% to 1.89%. Hampton Roads also experienced a small increase in its 12-month HC&SA employment growth rate moving average, which rose from 0.55% to 0.68%. However, Richmond’s HC&SA sector saw its 12-month employment growth rate moving average fall from 1.32% to 0.01%.

Subsector Employment Growth

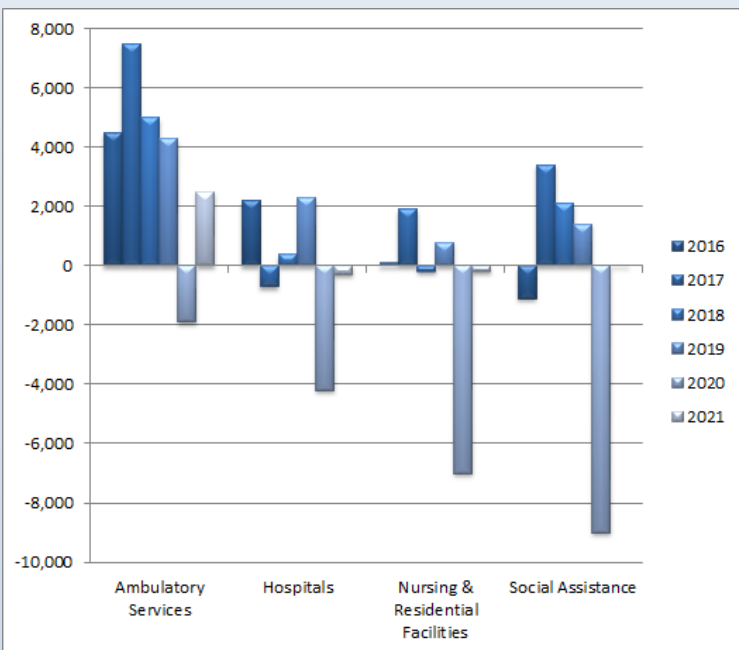


Figure 4: Annual & YTD Change in HC&SA Subsector Employment (Not Seasonally Adjusted, Full-Year Change for 2016-2020, Year-to-Date Change for 2021).

Ambulatory Health Care Services enjoyed their third consecutive month of positive employment growth in February. However, whereas the employment gains from the prior two months were quite modest, February’s increase was considerably more substantial. This gain amounted to 2,400 new jobs created during the month. This month’s increase continues the rapid employment recovery in Ambulatory Health Care Services. Last April, this HC&SA subsector was the most adversely impacted by the emergence of the coronavirus pandemic, losing 28,100 jobs in a single month. However, Ambulatory Health Care Services has now become the first HC&SA subsector in the state to recover all of its employment losses from last April.

Social Assistance also enjoyed strong employment growth in February with the creation of 700 new jobs during the month. At the same time, employment in Nursing & Residential Care Facilities increased by 200. As for Hospitals, this HC&SA subsector experienced no change in employment during the month.

Distribution of Growth by Subsector

Not Seasonally Adjusted	Employment, in Thousands				Growth Rate, Annualized		
	Feb. 2020	Nov. 2020	Jan. 2021	Feb. 2021	12 Month	3 Month	1 Month
Virginia							
Health Care & Social Assistance	461.4	422.8	440.8	444.1	-3.7%	1.2%	9.4%
<i>Ambulatory Health Care Services</i>	193.4	191.0	191.2	193.6	0.1%	5.6%	16.1%
<i>Hospitals</i>	108.2	104.2	103.9	103.9	-4.0%	-1.1%	0.0%
<i>Nursing & Residential Care Facilities</i>	78.9	71.7	71.4	71.6	-9.3%	-0.6%	3.4%
<i>Social Assistance</i>	80.9	75.9	74.3	75.0	-7.3%	-4.7%	11.9%
Hampton Roads							
Health Care & Social Assistance	96.9	92.7	91.5	91.9	-5.2%	-3.4%	5.4%
<i>Hospitals</i>	22.1	21.3	21.2	21.1	-4.5%	-3.7%	-5.5%
Northern Virginia							
Health Care & Social Assistance	140.9	133.0	133.4	136.4	-3.2%	10.6%	30.6%
<i>Ambulatory Health Care Services</i>	69.3	67.0	67.6	70.2	1.3%	20.5%	57.3%
<i>Hospitals</i>	26.6	25.9	25.9	25.9	-2.6%	0.0%	0.0%

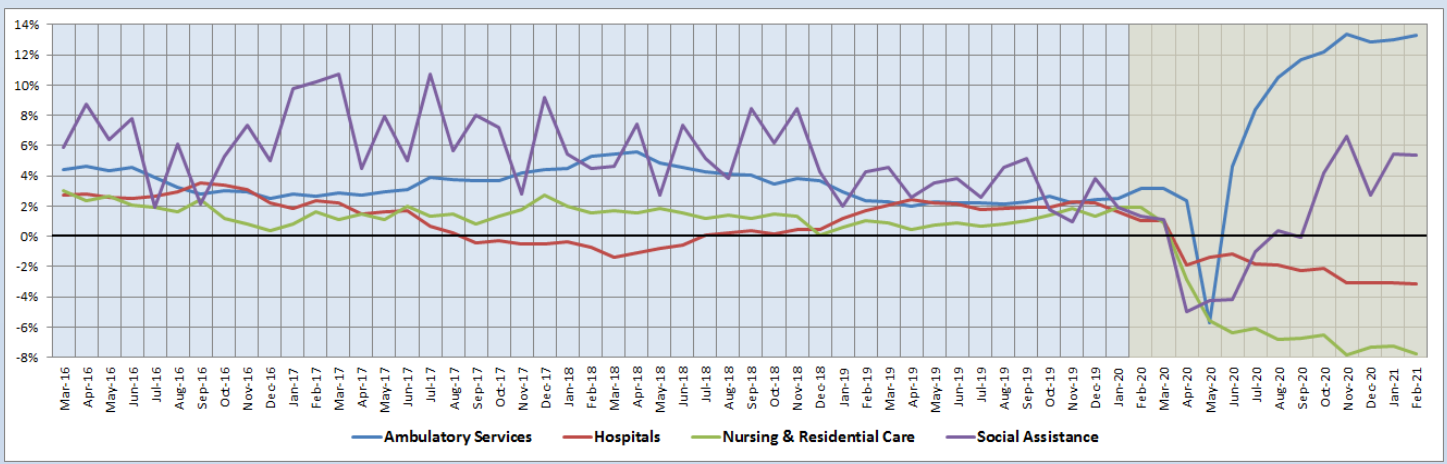
Preliminary estimates are italicized

Employment in Ambulatory Health Care Services grew at a 16.1% annualized rate in February. In addition, the three-month annualized employment growth rate for this HC&SA subsector increased to 5.6%. No other HC&SA subsector in the state has increased employment over the past three months. Even more impressively, Ambulatory Health Care Services has become the first HC&SA subsector to once again enjoy positive year-over-year job growth. Over the past year, this subsector has increased employment by 0.1%. Meanwhile, both Social Assistance and Nursing & Residential Care Facilities enjoyed strong one-month annualized employment growth rates of 11.9% and 3.4%, respectively, in February.

12-Month Average Employment Growth by Subsector

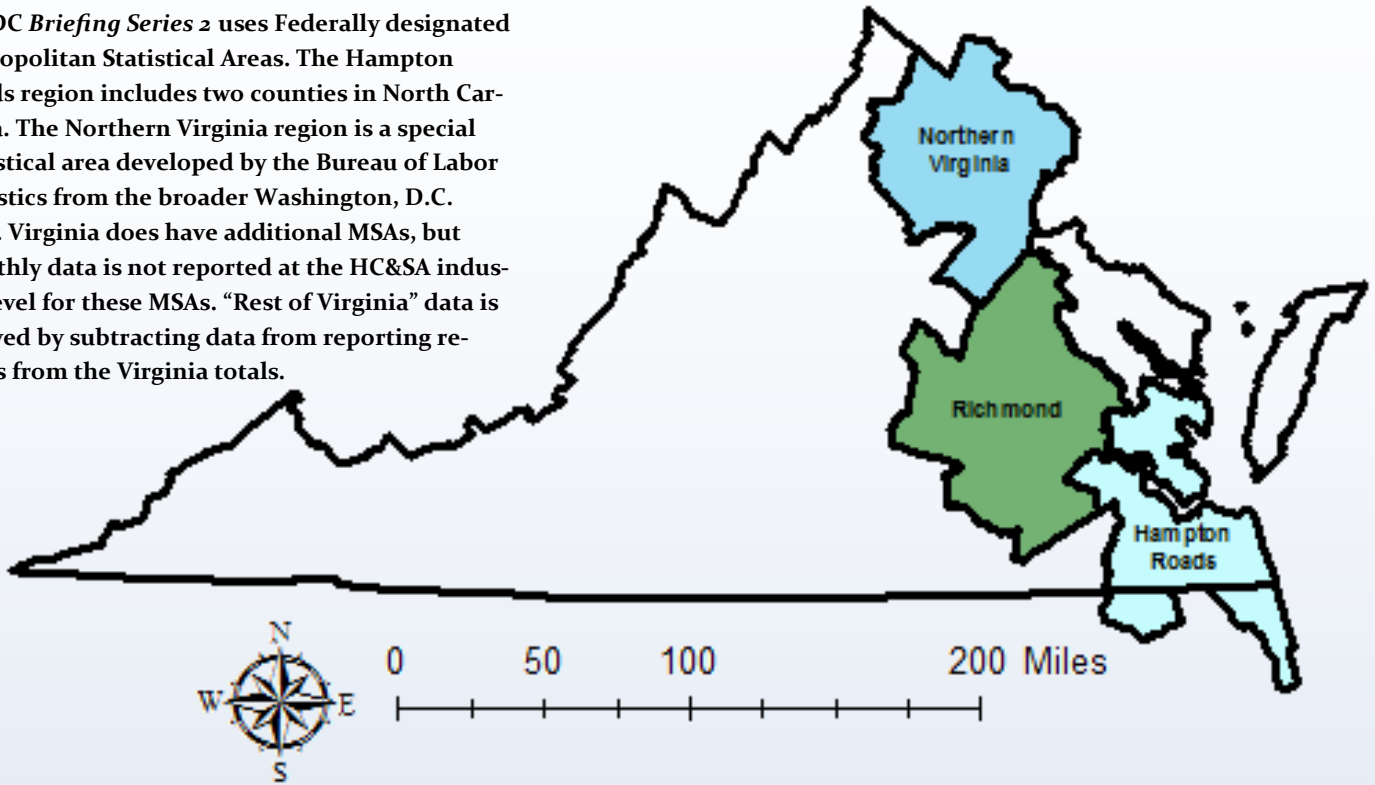
Although the 12-month employment growth rate moving average for Ambulatory Health Care Services has increased throughout most of the past year, it has started to plateau in recent months. However, February’s impressive job gain drove this moving average to a new high of 14.18%. Meanwhile, the comparable moving averages for Virginia’s other three HC&SA subsectors all experienced small declines during the month. The 12-month employment growth rate moving average for Social Assistance remains quite strong, although it did fall from 5.45% to 5.39% in February. As for Hospitals and Nursing & Residential Care Facilities, their moving averages fell to -3.14% and -7.78%, respectively, during the month.

Figure 5: 12-Month Moving Average, HC&SA Subsector Employment Growth Rate (Not Seasonally Adjusted).



Region Map

HWDC *Briefing Series 2* uses Federally designated Metropolitan Statistical Areas. The Hampton Roads region includes two counties in North Carolina. The Northern Virginia region is a special statistical area developed by the Bureau of Labor Statistics from the broader Washington, D.C. MSA. Virginia does have additional MSAs, but monthly data is not reported at the HC&SA industry level for these MSAs. “Rest of Virginia” data is derived by subtracting data from reporting regions from the Virginia totals.



Region Detail

Northern Virginia		Richmond		Hampton Roads	
<i>Northern VA, (Non-standard CES Area 94783)</i>		<i>Richmond, VA (MSA 40060)</i>		<i>Virginia Beach-Norfolk-Newport News, VA-NC (MSA 47260)</i>	
Counties:	Cities:	Counties:	Cities:	Counties:	Cities:
Arlington	Alexandria	Amelia	Colonial Heights	Gloucester	Chesapeake
Clarke	Fairfax	Caroline	Hopewell	Isle of Wight	Hampton
Culpeper	Falls Church	Charles City	Petersburg	James City	Newport News
Fairfax	Fredericksburg	Chesterfield	Richmond	Mathews	Norfolk
Fauquier	Manassas	Dinwiddie		Surry	Poquoson
Loudoun	Manassas Park	Goochland		York	Portsmouth
Prince William		Hanover			Suffolk
Rappahannock		Henrico		<i>Currituck, NC</i>	Virginia Beach
Spotsylvania		King William		<i>Gates, NC</i>	Williamsburg
Stafford		New Kent			
Warren		Powhatan			
		Prince George			
		Sussex			

Healthcare Workforce
Data Center

Perimeter Center
9960 Mayland Drive, Suite 300
Henrico, VA 23233-1463

Phone: (804) 597-4213
Fax: (804) 527-4434
E-mail: hwdc@dhp.virginia.gov
Website: www.dhp.virginia.gov/PublicResources/HealthcareWorkforceDataCenter

HWDC Staff:

Elizabeth Carter, PhD <i>Executive Director</i>	Yetty Shobo, PhD <i>Deputy Director</i>
Laura Jackson, MSHSA <i>Operations Manager</i>	Rajana Siva, MBA <i>Data Analyst</i>
Christopher Coyle <i>Research Assistant</i>	

The Department of Health Professions Healthcare Workforce Data Center works to improve the data collection and measurement of Virginia's healthcare workforce through regular assessment of workforce supply and demand issues among the 80 professions and 350,000 practitioners licensed in Virginia by DHP.

The HWDC collects data on Virginia's licensed health professionals through surveys completed during the online license renewal and application process. Survey results and data may be accessed on our website: www.dhp.virginia.gov/PublicResources/HealthcareWorkforceDataCenter/.

The HWDC also provides a series of Virginia Healthcare Workforce Briefs based data collected by the U.S. Department of Labor's Bureau of Labor Statistics and the U.S. Department of Commerce' Bureau of Economic Analysis.

Virginia Healthcare Workforce Briefs:

Series 1: State & National Employment (Monthly)

Series 2: Virginia Regional Employment (Monthly)

Series 3: Income & Compensation (Quarterly)

Follow us on. . .

Tumblr: <http://vahwdc.tumblr.com/>

About the Data

Data in this report are from the U.S. Department of Labor Bureau of Labor Statistics' Current Employment Statistics program. The CES program surveys about 143,000 businesses and government agencies monthly. Unless otherwise noted, this series uses data that are not seasonally adjusted. Seasonal variations related to weather, holidays, weekends, seasons and other predictable variations are apparent in the data. Short-term changes may be related to seasonal changes rather than underlying trends. Data from recent months is preliminary and subject to revision in future releases from the CES. Revisions will be reported in future editions of this series. Unless otherwise noted, the CES data presented in this series:

Includes:

- ◆ Data on employed individuals drawing a paycheck (payroll employees).
- ◆ All employees, regardless of role, occupation or hours worked.
- ◆ HC&SA employees in the private sector only.
- ◆ Persons employed by health professionals in private practice.
- ◆ Both government and private sector workers in nonfarm employment data.

Does not include:

- ◆ Self-employed workers or volunteers, including health professionals in private practice.
- ◆ HC&SA employees in the public sector. (These are counted as government workers in monthly reports).
- ◆ Information on hours worked or the quality of employment.
- ◆ Government workers in HC&SA level data. (Government workers, regardless of occupation and role, are classified as public sector employees).